

Chem-Impex International, Inc.

Tel: (630) 766-2112

E-mail: sales@chemimpex.com

Shipping and Correspondence:

935 Dillon Drive

Wood Dale, IL 60191

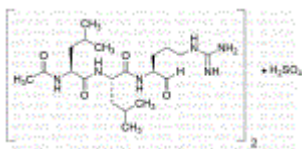
Fax: (630) 766-2218

Web site: www.chemimpex.com

Manufacturing site:

825 Dillon Drive

Wood Dale, IL 60191



Product Specifications

Catalogue Number	32802
Product	Leupeptin Ac-Leu-Leu-Arg-aldehyde · sulfate salt
CAS Number	103476-89-7
Molecular Formula	2C ₂₀ H ₃₈ N ₆ O ₄ •H ₂ SO ₄
Molecular Weight	951.2

Appearance	White powder
Water Content (Karl Fisher)	≤ 10%
Optical Rotation	[α] _D ²⁰ = -80 to -69 ° (C=1 in water)
Peptide Content	Net content by Nitrogen : ≥ 85%
Purity by HPLC	≥ 97%
Storage	Store at ≤ -10 °C

For Laboratory Use Only