

Chem-Impex International, Inc.

Tel: (630) 766-2112

E-mail: sales@chemimpex.com

Shipping and Correspondence:

935 Dillon Drive

Wood Dale, IL 60191

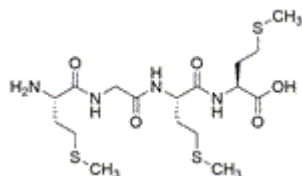
Fax: (630) 766-2218

Web site: www.chemimpex.com

Manufacturing site:

825 Dillon Drive

Wood Dale, IL 60191



Product Specifications

Catalogue Number	32623
Product	H-Met-Gly-Met-Met-OH
CAS Number	14517-45-4
Molecular Formula	C ₁₇ H ₃₂ N ₄ O ₅ S ₃
Molecular Weight	468.66

Appearance	White to off-white powder
Analysis by Mass Spectra	Conforms to standard
Purity by HPLC	≥ 98%
Storage	Store at ≤ -10 °C

For Laboratory Use Only