

# Chem-Impex International, Inc.

---

**Tel:** (630) 766-2112

**E-mail:** sales@chemimpex.com

**Shipping and Correspondence:**

935 Dillon Drive

Wood Dale, IL 60191

**Fax:** (630) 766-2218

**Web site:** www.chemimpex.com

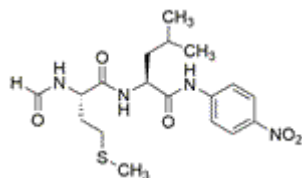
**Manufacturing site:**

825 Dillon Drive

Wood Dale, IL 60191

---

## Product Specifications



<b>Catalogue Number</b>	32597
<b>Product</b>	<b>For-Met-Leu-pNA</b>
<b>CAS Number</b>	111150-07-3
<b>Molecular Formula</b>	C <sub>18</sub> H <sub>26</sub> N <sub>4</sub> O <sub>5</sub> S
<b>Molecular Weight</b>	410.49

---

<b>Appearance</b>	White to off-white powder
<b>Analysis by Mass Spectra</b>	Conforms to standard
<b>Purity by HPLC</b>	≥ 98.5%
<b>Storage</b>	Store at 2-8 °C

**For Laboratory Use Only**