

Chem-Impex International, Inc.

Tel: (630) 766-2112

E-mail: sales@chemimpex.com

Shipping and Correspondence:

935 Dillon Drive

Wood Dale, IL 60191

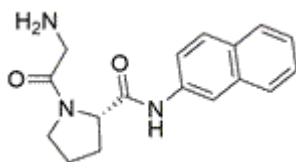
Fax: (630) 766-2218

Web site: www.chemimpex.com

Manufacturing site:

825 Dillon Drive

Wood Dale, IL 60191



Product Specifications

Catalogue Number	32592
Product	H-Gly-Pro-βNA
CAS Number	16046-01-8
Molecular Formula	C ₁₇ H ₁₉ N ₃ O ₂
Molecular Weight	297.36

Appearance	White solid
LCMS	Conforms to standard
Purity by HPLC	≥ 98%
Storage	Store at -20 °C

For Laboratory Use Only