

Chem-Impex International, Inc.

Tel: (630) 766-2112

E-mail: sales@chemimpex.com

Shipping and Correspondence:

935 Dillon Drive

Wood Dale, IL 60191

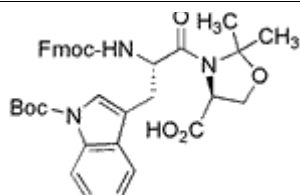
Fax: (630) 766-2218

Web site: www.chemimpex.com

Manufacturing site:

825 Dillon Drive

Wood Dale, IL 60191



Product Specifications

Catalogue Number	32557
Product	Fmoc-Trp(Boc)-Ser(Psi(Me,Me)pro)-OH Fmoc-Trp(Boc)-Ser($\Psi^{(Me,Me)}$ pro)-OH
CAS Number	908601-15-0
Molecular Formula	C ₃₇ H ₃₉ N ₃ O ₈
Molecular Weight	653.73

Appearance	White to off-white powder
Solubility	Clear colorless to slightly colored solution (5% in MeOH)
Water Content (Karl Fisher)	≤ 1%
Related Substances	Single unspecified impurities : ≤ 0.5% Fmoc-b-Ala-OH : ≤ 0.2% Fmoc-Trp(Boc)-OH : ≤ 0.1% Fmoc-Trp(Boc)-Ser-OH : ≤ 0.2%
Assay by titration	95 - 105% (on dry basis)
Other Enantiomer	D-Trp : ≤ 0.2% D-Ser : ≤ 0.2%
Purity by HPLC	≥ 99%
Purity by TLC	≥ 99%
Storage	Store at ≤ -10 °C
Additional Information	AcOH : ≤ 0.1%

For Laboratory Use Only