

Chem-Impex International, Inc.

Tel: (630) 766-2112

E-mail: sales@chemimpex.com

Shipping and Correspondence:

935 Dillon Drive

Wood Dale, IL 60191

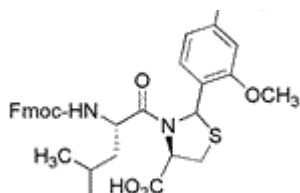
Fax: (630) 766-2218

Web site: www.chemimpex.com

Manufacturing site:

825 Dillon Drive

Wood Dale, IL 60191



Product Specifications

Catalogue Number	32553
Product	Fmoc-Leu-Cys(Psi(Dmp,H)pro)-OH Fmoc-Leu-Cys($\Psi^{(Dmp,H)}$ pro)-OH
CAS Number	1926163-06-5
Molecular Formula	C ₃₃ H ₃₆ N ₂ O ₇ S
Molecular Weight	604.72

Appearance	White to off-white powder
Solubility	Clear colorless to slightly colored solution (5% in MeOH)
Other Enantiomer	≤ 1.0% (D-Leu) ≤ 0.5% (D-Cys)
Purity by HPLC	≥ 98%
Purity by TLC	≥ 98%
Storage	Store at ≤ -10 °C

For Laboratory Use Only