

Chem-Impex International, Inc.

Tel: (630) 766-2112

E-mail: sales@chemimpex.com

Shipping and Correspondence:

935 Dillon Drive

Wood Dale, IL 60191

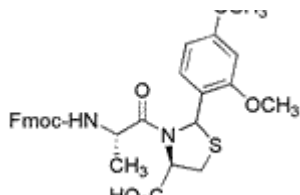
Fax: (630) 766-2218

Web site: www.chemimpex.com

Manufacturing site:

825 Dillon Drive

Wood Dale, IL 60191



Product Specifications

Catalogue Number	32550
Product	Fmoc-Ala-Cys(Psi(Dmp,H)pro)-OH Fmoc-Ala-Cys($\Psi^{(Dmp,H)}$ pro)-OH
CAS Number	2022956-37-0
Molecular Formula	C ₃₀ H ₃₀ N ₂ O ₇ S
Molecular Weight	562.64

Appearance	White to off-white powder
Solubility	Clear colorless to slightly colored solution (5% in MeOH)
Other Enantiomer	D-Ala : \leq 1.0% D-Cys : \leq 0.5%
Purity by HPLC	\geq 98%
Purity by TLC	\geq 99%
Storage	Store at \leq -10 °C

For Laboratory Use Only