

# Chem-Impex International, Inc.

---

**Tel:** (630) 766-2112

**E-mail:** sales@chemimpex.com

**Shipping and Correspondence:**

935 Dillon Drive

Wood Dale, IL 60191

**Fax:** (630) 766-2218

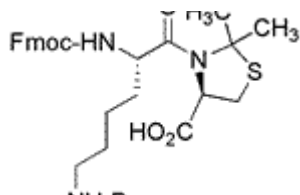
**Web site:** www.chemimpex.com

**Manufacturing site:**

825 Dillon Drive

Wood Dale, IL 60191

---



## Product Specifications

<b>Catalogue Number</b>	32548
<b>Product</b>	<b>Fmoc-Lys(Boc)-Cys(Psi(Me,Me)pro)-OH</b>
	Fmoc-Lys(Boc)-Cys( $\Psi^{(Me,Me)}$ pro)-OH
<b>CAS Number</b>	2022956-38-1
<b>Molecular Formula</b>	C <sub>32</sub> H <sub>41</sub> N <sub>3</sub> O <sub>7</sub> S
<b>Molecular Weight</b>	611.76

---

<b>Appearance</b>	White to off-white powder
<b>Solubility</b>	Clear colorless to slightly colored solution (5% in MeOH)
<b>Related Substances</b>	≤ 0.2% Fmoc-Lys(Boc)-OH
<b>Purity by HPLC</b>	≥ 99%
<b>Purity by TLC</b>	≥ 99%
<b>Storage</b>	Store at ≤ -10 °C

**For Laboratory Use Only**