

Chem-Impex International, Inc.

Tel: (630) 766-2112

E-mail: sales@chemimpex.com

Shipping and Correspondence:

935 Dillon Drive

Wood Dale, IL 60191

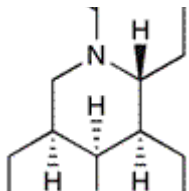
Fax: (630) 766-2218

Web site: www.chemimpex.com

Manufacturing site:

825 Dillon Drive

Wood Dale, IL 60191



Product Specifications

Catalogue Number	32545
Product	Matrine
	Matridin-15-one
	Sophocarpidine
CAS Number	519-02-8
Molecular Formula	C ₁₅ H ₂₄ N ₂ O
Molecular Weight	248.36

Appearance	White powder
Odor	Characteristic
Heavy Metals	≤ 10 ppm
Water Content (Karl Fisher)	≤ 5%
Fungi, Yeasts	Fungi : ≤ 100 cfu/g
E. Coli	Negative
Microbial Count	≤ 1000 cfu/g (Total Bacteria)
Salmonella	Negative
Particle Size	95% thr' 80 mesh
Ash	≤ 1.0%
Purity by HPLC	≥ 98%
Storage	Store at 2-8 °C
Additional Information	Identification : To pass test

Product Specifications

Catalog Number: 32545

For Laboratory Use Only