

Chem-Impex International, Inc.

Tel: (630) 766-2112

E-mail: sales@chemimpex.com

Shipping and Correspondence:

935 Dillon Drive

Wood Dale, IL 60191

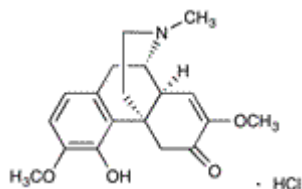
Fax: (630) 766-2218

Web site: www.chemimpex.com

Manufacturing site:

825 Dillon Drive

Wood Dale, IL 60191



Product Specifications

Catalogue Number	32533
Product	Sinomenine hydrochloride (9a,13a,14a)-7,8-Didehydro-4-hydroxy-3,7-dimethoxy-17-methyl-Cucoline
CAS Number	6080-33-7
Molecular Formula	C ₁₉ H ₂₃ NO ₄ •HCl
Molecular Weight	365.85

Appearance	White or off-white powder
Odor	Characteristic
Heavy Metals	≤ 20 ppm
pH	3 - 6
Loss on Drying	≤ 9%
Related Substances	Complies
Residue On Ignition	≤ 0.3%
Assay	≥ 98% (Dry basis)
Storage	Store at 2 - 8 °C

For Laboratory Use Only