

# Chem-Impex International, Inc.

---

**Tel:** (630) 766-2112

**E-mail:** sales@chemimpex.com

**Shipping and Correspondence:**

935 Dillon Drive

Wood Dale, IL 60191

**Fax:** (630) 766-2218

**Web site:** www.chemimpex.com

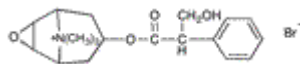
**Manufacturing site:**

825 Dillon Drive

Wood Dale, IL 60191

---

## Product Specifications



**Catalogue Number** 32524

**Product** **(-)-Scopolamine methyl bromide**

Hyoscyine methyl bromide

Methscopolamine bromide

**CAS Number** 155-41-9

**Molecular Formula** C<sub>18</sub>H<sub>24</sub>NO<sub>4</sub>•Br

**Molecular Weight** 398.29

---

**Appearance** White crystalline powder

**Clarity & Color** Clarity : Solution should be clear

**Solubility** Easily soluble in water, slightly soluble in ethanol, insoluble in chloroform and ether

**Melting Point** 220 - 225 °C

**pH** 5.5. - 7.5

**Optical Rotation** [α]<sup>20</sup><sub>D</sub> = -21 to -25 °

**Infrared Spectrum** Conforms to structure

**Loss on Drying** ≤ 3%

**Related Substances** Max single impurity : ≤ 0.5%  
Total impurities : ≤ 1%

**Residue On Ignition** ≤ 0.1%

**Assay (anhydrous basis)** ≥ 99%

**Storage** Store at RT

**Additional Information** Identification : Gives Vitali reaction and Bromide reaction.  
Other alkaloids : The solution must not become cloudy.  
Easy oxide : The red color shall not disappear completely within 5 minutes of the solution.

**For Laboratory Use Only**