

# Chem-Impex International, Inc.

---

**Tel:** (630) 766-2112

**E-mail:** sales@chemimpex.com

**Shipping and Correspondence:**

935 Dillon Drive

Wood Dale, IL 60191

**Fax:** (630) 766-2218

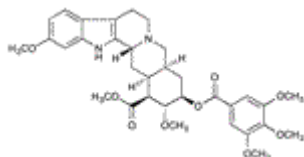
**Web site:** www.chemimpex.com

**Manufacturing site:**

825 Dillon Drive

Wood Dale, IL 60191

---



## Product Specifications

<b>Catalogue Number</b>	32515
<b>Product</b>	<b>Reserpine</b>
<b>CAS Number</b>	(3 $\beta$ , 16 $\beta$ , 17 $\alpha$ , 18 $\beta$ , 20 $\alpha$ )-11,17-Dimethoxy-18-[(3,4,5- 50-55-5
<b>Molecular Formula</b>	C <sub>33</sub> H <sub>40</sub> N <sub>2</sub> O <sub>9</sub>
<b>Molecular Weight</b>	608.68

---

<b>Appearance</b>	White or pale buff to slightly yellowish crystalline powder
<b>Solubility</b>	Insoluble in water, freely soluble in acetic acid and in chloroform, slightly soluble in benzene, very slightly soluble in alcohol and in ether.
<b>Odor</b>	Odorless
<b>Infrared Spectrum</b>	Conforms to structure
<b>Loss on Drying</b>	≤ 0.5%
<b>Residual Solvents</b>	Methanol : ≤ 3000 ppm Ethanol : ≤ 5000 ppm Chloroform : ≤ 60 ppm Methylene chloroform : ≤ 600 ppm
<b>Residue On Ignition</b>	≤ 0.1%
<b>Assay by titration</b>	97 - 101% (dried basis)
<b>Storage</b>	Store at RT

**For Laboratory Use Only**