

# Chem-Impex International, Inc.

---

**Tel:** (630) 766-2112

**E-mail:** sales@chemimpex.com

**Shipping and Correspondence:**

935 Dillon Drive

Wood Dale, IL 60191

**Fax:** (630) 766-2218

**Web site:** www.chemimpex.com

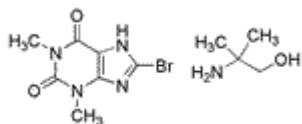
**Manufacturing site:**

825 Dillon Drive

Wood Dale, IL 60191

---

## Product Specifications



<b>Catalogue Number</b>	32510
<b>Product</b>	<b>Pamabrom</b> 8-Bromotheophylline 2-Amino-2-methyl-1-propanol
<b>CAS Number</b>	606-04-2
<b>Molecular Formula</b>	C <sub>11</sub> H <sub>18</sub> BrN <sub>5</sub> O <sub>3</sub>
<b>Molecular Weight</b>	348.2

---

<b>Warnings</b>	<i>Avoid excessive heat and light!</i>
<b>Appearance</b>	White crystalline powder
<b>Melting Point</b>	294 - 296 °C (dec.)
<b>Water Content (Karl Fisher)</b>	≤ 3%
<b>Assay by titration</b>	≥ 98%
<b>Purity by HPLC</b>	≥ 98%
<b>Storage</b>	Store at RT
<b>Additional Information</b>	Content of 2-amino-2-methyl-1-propanol : 24 - 27% Content of 8-Bromotheophylline : 72 - 77%

**For Laboratory Use Only**