

Chem-Impex International, Inc.

Tel: (630) 766-2112

E-mail: sales@chemimpex.com

Shipping and Correspondence:

935 Dillon Drive

Wood Dale, IL 60191

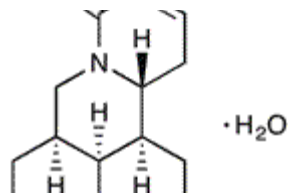
Fax: (630) 766-2218

Web site: www.chemimpex.com

Manufacturing site:

825 Dillon Drive

Wood Dale, IL 60191



Product Specifications

Catalogue Number	32502
Product	Sophocarpine monohydrate 13,14-Didehydromatridin-15-one monohydrate
CAS Number	145572-44-7
Molecular Formula	C ₁₅ H ₂₂ N ₂ O•H ₂ O
Molecular Weight	264.36

Warnings	<i>Keep container tightly closed in a dry and well-ventilated place!</i>
Appearance	White to pale yellow crystalline powder
Elemental Analysis (Theory)	N : 10 ± 1%
Water Content (Karl Fisher)	6 - 9%
Optical Rotation	[α] ₂₀ /D = -23 to -27 ° (C=1, MeOH)
Purity by HPLC	≥ 98%
Storage	Store at RT

For Laboratory Use Only