

Chem-Impex International, Inc.

Tel: (630) 766-2112

E-mail: sales@chemimpex.com

Shipping and Correspondence:

935 Dillon Drive

Wood Dale, IL 60191

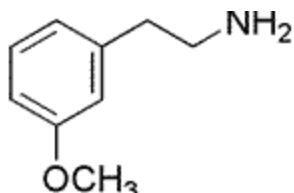
Fax: (630) 766-2218

Web site: www.chemimpex.com

Manufacturing site:

825 Dillon Drive

Wood Dale, IL 60191



Product Specifications

Catalogue Number	32493
Product	3-Methoxyphenethylamine
	2-(3-Methoxyphenyl)ethylamine
	3-(2-Aminoethyl)anisole
CAS Number	2039-67-0
Molecular Formula	C ₉ H ₁₃ NO
Molecular Weight	151.21
<hr/>	
Appearance	Colorless to light yellow clear liquid
Water Content (Karl Fisher)	≤ 0.3%
Purity by GC	≥ 99%
Storage	Store at RT

For Laboratory Use Only