

Chem-Impex International, Inc.

Tel: (630) 766-2112

E-mail: sales@chemimpex.com

Shipping and Correspondence:

935 Dillon Drive

Wood Dale, IL 60191

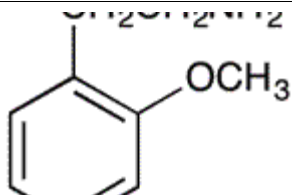
Fax: (630) 766-2218

Web site: www.chemimpex.com

Manufacturing site:

825 Dillon Drive

Wood Dale, IL 60191



Product Specifications

Catalogue Number	32490
Product	2-Methoxyphenethylamine 2-(2-Methoxyphenyl)ethylamine 2-(2-Aminoethyl)anisole
CAS Number	2045-79-6
Molecular Formula	C ₉ H ₁₃ NO
Molecular Weight	151.21

Warnings	<i>Air sensitive!</i>
Appearance	Clear colorless to pale yellow liquid
Boiling point	236 - 237 °C
Flash Point	113 °C
Density	1.033
Refractive Index	1.541
Infrared Spectrum	Conform to structure
Assay by titration	≥ 98%
Purity by GC	≥ 98%
Storage	Store at RT

For Laboratory Use Only