

# Chem-Impex International, Inc.

---

**Tel:** (630) 766-2112

**E-mail:** sales@chemimpex.com

**Shipping and Correspondence:**

935 Dillon Drive

Wood Dale, IL 60191

**Fax:** (630) 766-2218

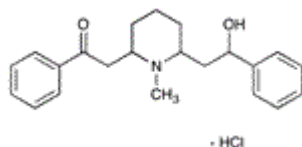
**Web site:** www.chemimpex.com

**Manufacturing site:**

825 Dillon Drive

Wood Dale, IL 60191

---



## Product Specifications

<b>Catalogue Number</b>	32488
<b>Product</b>	<b>(-)-Lobeline hydrochloride</b> $\alpha$ -Lobeline hydrochloride L-Lobeline hydrochloride
<b>CAS Number</b>	134-63-4
<b>Molecular Formula</b>	C <sub>22</sub> H <sub>27</sub> NO <sub>2</sub> •HCl
<b>Molecular Weight</b>	373.92

---

<b>Appearance</b>	White to almost white crystalline powder
<b>Melting Point</b>	183 - 185 °C
<b>Optical Rotation</b>	[ $\alpha$ ] <sub>20</sub> /D = -55 to -60 ° (C=2 in H <sub>2</sub> O)
<b>Infrared Spectrum</b>	Conforms to structure
<b>Assay by titration</b>	≥ 98%
<b>Purity by HPLC</b>	≥ 98%
<b>Storage</b>	Store at RT

**For Laboratory Use Only**