

Chem-Impex International, Inc.

Tel: (630) 766-2112

E-mail: sales@chemimpex.com

Shipping and Correspondence:

935 Dillon Drive

Wood Dale, IL 60191

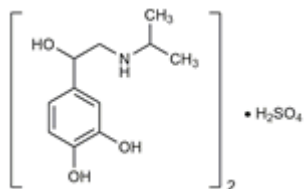
Fax: (630) 766-2218

Web site: www.chemimpex.com

Manufacturing site:

825 Dillon Drive

Wood Dale, IL 60191



Product Specifications

Catalogue Number	32483
Product	Isoproterenol sulfate Isoprenaline sulfate
CAS Number	299-95-6
Molecular Formula	$\text{C}_{22}\text{H}_{34}\text{N}_2\text{O}_6 \cdot \text{H}_2\text{SO}_4$
Molecular Weight	520.59

Appearance	White or almost white crystalline powder
Anion	Chloride (Cl) : $\leq 0.14\%$
Water Content (Karl Fisher)	$\leq 7\%$
Related Substances	Limit of Isoprenalone : To pass test
Residue On Ignition	$\leq 0.2\%$
Assay (anhydrous basis)	97 - 103%
Grade	Meets USP specification
Storage	Store at RT
Additional Information	Identification : To pass test

For Laboratory Use Only