

# Chem-Impex International, Inc.

---

**Tel:** (630) 766-2112

**E-mail:** sales@chemimpex.com

**Shipping and Correspondence:**

935 Dillon Drive

Wood Dale, IL 60191

**Fax:** (630) 766-2218

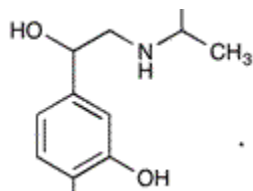
**Web site:** www.chemimpex.com

**Manufacturing site:**

825 Dillon Drive

Wood Dale, IL 60191

---



· HCl

## Product Specifications

**Catalogue Number** 32482  
**Product** **Isoprenaline hydrochloride**

DL-Isoproterenol hydrochloride

Isoproterenol hydrochloride

**CAS Number** 51-30-9  
**Molecular Formula** C<sub>11</sub>H<sub>17</sub>NO<sub>3</sub>•HCl  
**Molecular Weight** 247.72

---

**Appearance** White crystalline powder  
**Solubility** Freely soluble in water, sparingly soluble in alcohol and less soluble in dehydrated alcohol. Insoluble in chloroform and ether  
**Odor** Odorless  
**Melting Point** 165 - 170 °C  
**Anion** Sulfate : ≤ 2000 ppm  
Chloride : 13.9 - 14.6%  
**pH** 5  
**Infrared Spectrum** Conforms to structure  
**Loss on Drying** ≤ 1%  
**Organic Volatile Impurities** Methanol : ≤ 3000 ppm  
Acetone : ≤ 5000 ppm  
**Related Substances** Limit of isoproterenone : ≤ 0.2%  
**Residue On Ignition** ≤ 0.2%  
**<sup>1</sup>H NMR** Conforms to structure  
**Assay** 97 - 101%  
**Grade** USP  
**Storage** Store at RT

# *Product Specifications*

**Catalog Number: 32482**

---

**Additional Information**    Taste : Slightly bitter  
Gradually darkens on exposure to air and light. It's solution become pink to brownish pink on standing exposed to air, doing so almost immediately when rendered alkaline  
Ultraviolet Absorption : To pass test

**For Laboratory Use Only**