

# Chem-Impex International, Inc.

---

**Tel:** (630) 766-2112

**E-mail:** sales@chemimpex.com

**Shipping and Correspondence:**

935 Dillon Drive

Wood Dale, IL 60191

**Fax:** (630) 766-2218

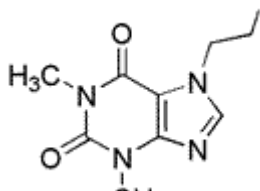
**Web site:** www.chemimpex.com

**Manufacturing site:**

825 Dillon Drive

Wood Dale, IL 60191

---



## Product Specifications

<b>Catalogue Number</b>	32477
<b>Product</b>	<b>Etofylline</b> 7-(β-Hydroxyethyl)theophylline 1,3-Dimethyl-7-(2-hydroxyethyl)xanthine
<b>CAS Number</b>	519-37-9
<b>Molecular Formula</b>	C <sub>9</sub> H <sub>12</sub> N <sub>4</sub> O <sub>3</sub>
<b>Molecular Weight</b>	224.22

---

<b>Appearance</b>	White or almost white crystalline powder
<b>Appearance of Solution</b>	Clear and colorless
<b>Solubility</b>	Soluble in water, slightly soluble in alcohol.
<b>Melting Point</b>	161 - 166 °C
<b>Heavy Metals</b>	≤ 20 ppm
<b>Acidity</b>	≤ 0.4 mL of 0.01 M NaOH.
<b>Infrared Spectrum</b>	Conforms to standard
<b>Loss on Drying</b>	≤ 0.5% (at 105 °C)
<b>Related Substances</b>	Complies by TLC
<b>Sulfated Ash</b>	≤ 0.1%
<b>Assay</b>	98.5-101% (Dry basis)
<b>Storage</b>	Store at 0 - 8 °C
<b>Additional Information</b>	Identification: Crystals melt at 101 - 105 °C Positive for the reaction of Xanthine's.

**For Laboratory Use Only**