

Chem-Impex International, Inc.

Tel: (630) 766-211

E-mail: sales@chemimpex.co

Shipping and Correspondence

935 Dillon Drive

Wood Dale, IL 60191

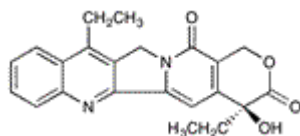
Fax: (630) 766-221

Web site: www.chemimpex.com

Manufacturing site:

825 Dillon Drive

Wood Dale, IL 60191



Product Specifications

Catalogue Number 32472

Product **7-Ethylcamptothecin**

(4*S*)-4,11-Diethyl-4-hydroxy-1*H*-pyrano[3',4':6,7]indolizino[1,2-*b*]quinoline-3,14(4*H*,12*H*)-dione

CAS Number 78287-27-1

Molecular Formula C₂₂H₂₀N₂O₄

Molecular Weight 376.41

Warnings *Light sensitive! Slightly Hygroscopic!*

Appearance Pale yellow needle crystalline powder

Solubility Soluble in chloroform, very slightly soluble in methanol, practically insoluble in water, soluble in dilute alkali solution

Melting Point 258 - 260 °C (dec.)

Infrared Spectrum Conforms to structure

Loss on Drying ≤ 0.5%

Purity by HPLC ≥ 99%

Storage Store at RT

For Laboratory Use Only