

Chem-Impex International, Inc.

Tel: (630) 766-2112

E-mail: sales@chemimpex.com

Shipping and Correspondence:

935 Dillon Drive

Wood Dale, IL 60191

Fax: (630) 766-2218

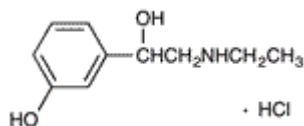
Web site: www.chemimpex.com

Manufacturing site:

825 Dillon Drive

Wood Dale, IL 60191

Product Specifications



Catalogue Number	32469
Product	Etilerfrine hydrochloride 2-Ethylamino-1-(3-hydroxyphenyl)ethanol hydrochloride 3-[2-(Ethylamino)-1-hydroxyethyl]phenol hydrochloride
CAS Number	943-17-9
Molecular Formula	C ₁₀ H ₁₅ NO ₂ •HCl
Molecular Weight	217.69

Warnings	<i>Moisture sensitive! Light sensitive!</i>
Appearance	White crystalline powder
Melting Point	117 - 123 °C
Purity by HPLC	≥ 98%
Purity by TLC	≥ 98%
Storage	Store at RT

For Laboratory Use Only