

Chem-Impex International, Inc.

Tel: (630) 766-2112

E-mail: sales@chemimpex.com

Shipping and Correspondence:

935 Dillon Drive

Wood Dale, IL 60191

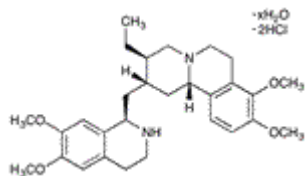
Fax: (630) 766-2218

Web site: www.chemimpex.com

Manufacturing site:

825 Dillon Drive

Wood Dale, IL 60191



Product Specifications

Catalogue Number	32468
Product	Emetine dihydrochloride hydrate
CAS Number	316-42-7
Molecular Formula	C ₂₉ H ₄₀ N ₂ O ₄ •2HCl•H ₂ O
Molecular Weight	553.56

Appearance	Off-white powder
Water Content (Karl Fisher)	≤ 5%
¹H NMR	Conforms to structure
Purity by HPLC	≥ 98%
ESI-MS	MW : 553.5 ± 1
Storage	Store at 2 - 8 °C

For Laboratory Use Only