

Chem-Impex International, Inc.

Tel: (630) 766-2112

E-mail: sales@chemimpex.com

Shipping and Correspondence:

935 Dillon Drive

Wood Dale, IL 60191

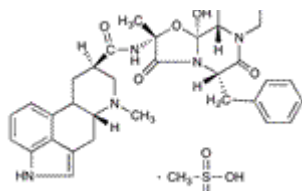
Fax: (630) 766-2218

Web site: www.chemimpex.com

Manufacturing site:

825 Dillon Drive

Wood Dale, IL 60191



Product Specifications

Catalogue Number	32466
Product	Dihydroergotamine methanesulfonate salt Dihydroergotamine Mesylate
CAS Number	6190-39-2
Molecular Formula	C ₃₃ H ₃₇ N ₅ O ₅ •CH ₄ O ₃ S
Molecular Weight	679.78

Appearance	White to light yellow to light red powder to crystal
Solubility	Almost transparent in methanol
Optical Rotation	[α] _D ²⁰ = -17 to -23 ° (C=0.25, JP Method) (calcd. on dried substance)
Loss on Drying	≤ 2%
Assay by titration	≥ 95%
Purity by HPLC	≥ 99%
Storage	Store at RT

For Laboratory Use Only