

Chem-Impex International, Inc.

Tel: (630) 766-2112

E-mail: sales@chemimpex.com

Shipping and Correspondence:

935 Dillon Drive

Wood Dale, IL 60191

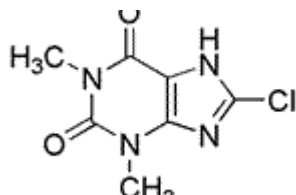
Fax: (630) 766-2218

Web site: www.chemimpex.com

Manufacturing site:

825 Dillon Drive

Wood Dale, IL 60191



Product Specifications

Catalogue Number	32452
Product	8-Chlorotheophylline 8-Chloro-1,3-dimethyl-2,6-purinedione
CAS Number	85-18-7
Molecular Formula	C ₇ H ₇ ClN ₄ O ₂
Molecular Weight	214.61

Appearance	White to almost white powder to crystal
Solubility	Almost transparent (In sodium hydroxide solution)
Assay by titration	≥ 99% (Neutralization)
Purity by HPLC	≥ 99%
Storage	Store at RT

For Laboratory Use Only