

Chem-Impex International, Inc.

Tel: (630) 766-2112

E-mail: sales@chemimpex.com

Shipping and Correspondence:

935 Dillon Drive

Wood Dale, IL 60191

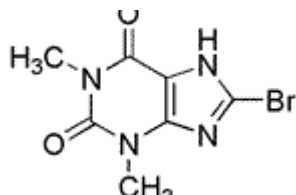
Fax: (630) 766-2218

Web site: www.chemimpex.com

Manufacturing site:

825 Dillon Drive

Wood Dale, IL 60191



Product Specifications

Catalogue Number	32450
Product	8-Bromotheophylline 8-Bromo-1,3-dimethyl-3,7-dihydro-1 <i>H</i> -pyrine-2,6-dione
CAS Number	10381-75-6
Molecular Formula	C ₇ H ₇ BrN ₄ O ₂
Molecular Weight	259.06

Appearance	White powder
Melting Point	315 - 320 °C
Assay by titration	≥ 98%
Purity by HPLC	≥ 98%
Storage	Store at RT

For Laboratory Use Only