

Chem-Impex International, Inc.

Tel: (630) 766-2112

E-mail: sales@chemimpex.com

Shipping and Correspondence:

935 Dillon Drive

Wood Dale, IL 60191

Fax: (630) 766-2218

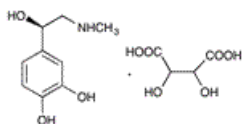
Web site: www.chemimpex.com

Manufacturing site:

825 Dillon Drive

Wood Dale, IL 60191

Product Specifications



Catalogue Number	32438
Product	(-)-Epinephrine (+)-bitartrate salt L-Adrenaline bitartrate
	L-3,4-Dihydroxy- α -(methylaminomethyl)benzyl alcohol D-hydrogen
CAS Number	51-42-3
Molecular Formula	C ₉ H ₁₃ NO ₃ •C ₄ H ₆ O ₆
Molecular Weight	333.29

Appearance	White crystalline powder
Melting Point	147 - 152 °C (dec.)
Optical Rotation	[α] _D ²⁰ = -50.0 to -53.5 °
Infrared Spectrum	Conforms to structure
Loss on Drying	≤ 0.5%
Related Substances	Norepinephrine : ≤ 0.15% Adrenalone : ≤ 0.2% Unidentified impurity : ≤ 0.3% Any unspecified impurity : ≤ 0.1% Total impurities : ≤ 0.6%
Residue On Ignition	≤ 0.1%
Assay	97 - 103% (on dry basis)
Other Enantiomer	≤ 3%
Chiral Purity	≥ 97% (ee)
Grade	Meets USP specifications
Storage	Store at 2 - 8 °C
Additional Information	Limit of adrenalone : ≤ 0.2% Limit of norepinephrine bitartrate : ≤ 4%

For Laboratory Use Only