

# Chem-Impex International, Inc.

---

**Tel:** (630) 766-2112

**E-mail:** sales@chemimpex.com

**Shipping and Correspondence:**

935 Dillon Drive

Wood Dale, IL 60191

**Fax:** (630) 766-2218

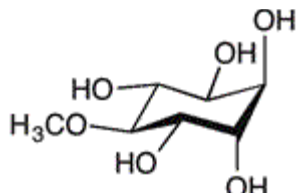
**Web site:** www.chemimpex.com

**Manufacturing site:**

825 Dillon Drive

Wood Dale, IL 60191

---



## Product Specifications

<b>Catalogue Number</b>	32321
<b>Product</b>	<b>D-Pinitol</b>  3-O-Methyl-D-chiro-inositol
<b>CAS Number</b>	10284-63-6
<b>Molecular Formula</b>	C <sub>7</sub> H <sub>14</sub> O <sub>6</sub>
<b>Molecular Weight</b>	194.18
<hr/>	
<b>Appearance</b>	White powder
<b>Odor</b>	Characteristic
<b>Melting Point</b>	178 - 185 °C
<b>Bulk density</b>	45 - 60g/100ml
<b>Heavy Metals</b>	Lead (Pb): ≤ 2 ppm Arsenic (As): ≤ 2 ppm Cadmium (Cd): ≤ 2 ppm Mercury (Hg): ≤ 0.5ppm Total heavy metals: ≤ 10 ppm
<b>Yeast and Mold</b>	≤ 300 cfu/g
<b>Optical Rotation</b>	[α] <sub>D</sub> <sup>20</sup> = 60 to 70° (C=1 in H <sub>2</sub> O)
<b>Loss on Drying</b>	≤ 5.0%
<b>Residual Solvents</b>	None
<b>E. Coli, Salmonella, S.Aureus</b>	Negative
<b>Microbial Count</b>	≤ 3000 cfu/g (Total Plate Count)
<b>Particle Size</b>	100% pass 80 mesh
<b>Ash</b>	≤ 5.0%
<b>Purity by HPLC</b>	≥ 99%
<b>Storage</b>	Store at RT

# *Product Specifications*

**Catalog Number: 32321**

---

**Additional Information**

Sugars:  $\leq 3.0\%$

Taste: Characteristic

**For Laboratory Use Only**