

Chem-Impex International, Inc.

Tel: (630) 766-2112

E-mail: sales@chemimpex.com

Shipping and Correspondence:

935 Dillon Drive

Wood Dale, IL 60191

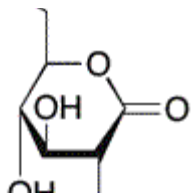
Fax: (630) 766-2218

Web site: www.chemimpex.com

Manufacturing site:

825 Dillon Drive

Wood Dale, IL 60191



Product Specifications

Catalogue Number	32264
Product	D-(+)-Gluconic acid δ-lactone D-(+)-Glucono-1,5-lactone δ -Gluconolactone
CAS Number	90-80-2
Molecular Formula	C ₆ H ₁₀ O ₆
Molecular Weight	178.14

Appearance	White crystalline powder
Melting Point	150 - 154 °C
Heavy Metals	≤ 10 mg/kg (Pb)
Anion	Chloride : ≤ 50 mg/kg Sodium : ≤ 30 mg/kg
Cation	Lead : ≤ 1 mg/kg
Water Content (Karl Fisher)	≤ 0.15%
Reducing Substances	≤ 0.5%
Ash	≤ 0.1 %
Assay by titration	99.0 - 100.5%
Storage	Store at RT
Additional Information	Characteristics : Conforms

For Laboratory Use Only