

Chem-Impex International, Inc.

Tel: (630) 766-2112

E-mail: sales@chemimpex.com

Shipping and Correspondence:

935 Dillon Drive

Wood Dale, IL 60191

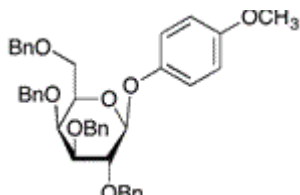
Fax: (630) 766-2218

Web site: www.chemimpex.com

Manufacturing site:

825 Dillon Drive

Wood Dale, IL 60191



Product Specifications

Catalogue Number	32222
Product	4-Methoxyphenyl 2,3,4,6-tetra-O-benzyl-β-D-
CAS Number	143536-99-6
Molecular Formula	C ₄₁ H ₄₂ O ₇
Molecular Weight	646.78

Appearance	White to almost white powder to crystal
Melting Point	108 - 112 °C
Optical Rotation	[α] _D ²⁰ = -16 to -19 ° (C=1 in CHCl ₃)
Purity by HPLC	≥ 99%
Storage	Store at ≤ -10 °C

For Laboratory Use Only