

Chem-Impex International, Inc.

Tel: (630) 766-211

E-mail: sales@chemimpex.co

Shipping and Correspondence

935 Dillon Drive

Wood Dale, IL 60191

Fax: (630) 766-221

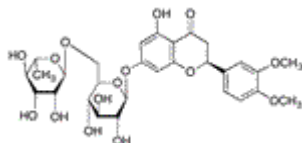
Web site: www.chemimpex.com

Manufacturing site:

825 Dillon Drive

Wood Dale, IL 60191

Product Specifications



Catalogue Number	32181
Product	Methyl hesperidine
	Vitamin P (Water soluble)
CAS Number	11013-97-1
Molecular Formula	C ₂₉ H ₃₆ O ₁₅
Molecular Weight	624.59

Warnings	<i>Hygroscopic!</i>
Appearance	Orange yellow or light yellow crystalline powder
Solubility	Practically insoluble in ether, soluble in water, very slightly soluble in ethanol (96%) or acetone.
Odor	Foul odor
Heavy Metals	≤ 20 ppm
Yeast and Mold	≤ 100 cfu/g
Loss on Drying	≤ 5%
Residual Solvents	Methanol : ≤ 3000 ppm Ethanol : ≤ 5000 ppm n-Butanol : ≤ 5000 ppm
E. Coli	Absence in 1g
Microbial Count	≤ 1000 cfu/g (TAMC)
Salmonella	Absence in 10g
Sulfated Ash	≤ 0.5%
Purity by UV	≥ 96% (on dried substance)
Storage	Store at RT
Additional Information	Taste : Bitter taste

For Laboratory Use Only