

Chem-Impex International, Inc.

Tel: (630) 766-2112

E-mail: sales@chemimpex.com

Shipping and Correspondence:

935 Dillon Drive

Wood Dale, IL 60191

Fax: (630) 766-2218

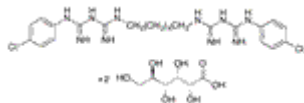
Web site: www.chemimpex.com

Manufacturing site:

825 Dillon Drive

Wood Dale, IL 60191

Product Specifications



Catalogue Number	32123
Product	Chlorhexidine digluconate solution 20% in 1,6-Bis(<i>N</i> ⁵ -[<i>p</i> -chlorophenyl]- <i>N</i> ⁷ -biguanido)hexane 1,1'-Hexamethylenebis(5-[<i>p</i> -chlorophenyl]biguanide)
CAS Number	18472-51-0
Molecular Formula	C ₂₂ H ₃₀ Cl ₂ N ₁₀ •2C ₆ H ₁₂ O ₇
Molecular Weight	897.76

Appearance	Almost colorless or pale yellowish liquid
Specific Gravity	1.06 - 1.07
pH	5.5 - 7.0
Infrared Spectrum	Conforms to structure
Related Substances	≤ 3%
Assay	19 - 21%
Storage	Store at 2 - 8 °C
Additional Information	<i>p</i> -Chloroaniline : ≤ 500 µg/mL

For Laboratory Use Only