

Chem-Impex International, Inc.

Tel: (630) 766-2112

E-mail: sales@chemimpex.com

Shipping and Correspondence:

935 Dillon Drive

Wood Dale, IL 60191

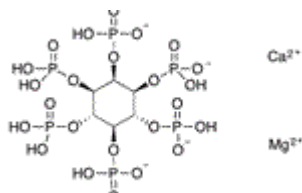
Fax: (630) 766-2218

Web site: www.chemimpex.com

Manufacturing site:

825 Dillon Drive

Wood Dale, IL 60191



Product Specifications

Catalogue Number	32100
Product	Phytin
CAS Number	3615-82-5
Molecular Formula	$C_6H_{14}O_{24}P_6 \cdot Ca \cdot Mg$
Molecular Weight	720.38

Appearance	White or slight off-white powder
Anion	Total phosphorus : $\geq 19\%$
Cation	Calcium (Ca) : $\geq 17\%$ Magnesium (Mg) : 3 - 5% Arsenic (As) : ≤ 3 ppm Lead (Pb) : ≤ 0.1 ppm Cadmium (Cd) : ≤ 0.5 ppm Mercury (Hg) : ≤ 0.1 ppm
Water Content (Karl Fisher)	$\leq 2\%$
Yeast and Mold	≤ 100 cfu/g
Coliform Organisms	≤ 50 cfu/g
E. Coli	Negative
Microbial Count	≤ 1000 cfu/g (TPC)
Salmonella	Negative
Particle Size	$\geq 90\%$ through 40 mesh
Residue On Ignition	68 - 78%
Storage	Store at 2 - 8 °C

For Laboratory Use Only