

# Chem-Impex International, Inc.

---

**Tel:** (630) 766-2112

**E-mail:** sales@chemimpex.com

**Shipping and Correspondence:**

935 Dillon Drive

Wood Dale, IL 60191

**Fax:** (630) 766-2218

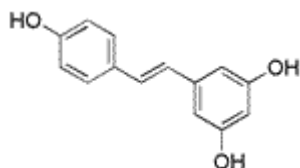
**Web site:** www.chemimpex.com

**Manufacturing site:**

825 Dillon Drive

Wood Dale, IL 60191

---



## Product Specifications

<b>Catalogue Number</b>	32060
<b>Product</b>	<b>Resveratrol</b> 3,4',5-Trihydroxy- <i>trans</i> -stilbene 5-[(1E)-2-(4-Hydroxyphenyl)ethenyl]-1,3-benzenediol
<b>CAS Number</b>	501-36-0
<b>Molecular Formula</b>	C <sub>14</sub> H <sub>12</sub> O <sub>3</sub>
<b>Molecular Weight</b>	228.24

---

<b>Appearance</b>	Fine white powder
<b>Solubility</b>	Soluble in ethanol and water solution
<b>Odor</b>	Characteristic odor
<b>Bulk density</b>	20 - 45 g/ 100ml (Loose) ≥ 35 g/100 ml (Tapped)
<b>Heavy Metals</b>	≤ 10 ppm
<b>Cation</b>	Arsenic : ≤ 2 ppm Lead : ≤ 2 ppm Cadmium : ≤ 1 ppm Mercury : ≤ 0.2 ppm
<b>Yeast and Mold</b>	≤ 100 cfu/g
<b>Loss on Drying</b>	≤ 5%
<b>Residual Solvents</b>	≤ 0.05%
<b>Solvent</b>	Ethanol and water
<b>E. Coli</b>	Negative
<b>Microbial Count</b>	≤ 10000 cfu/g (TPC)
<b>Salmonella</b>	Absent
<b>Staphylococcus Aureus</b>	Negative
<b>Particle Size</b>	≥ 99% thr' 80 mesh
<b>Sulfated Ash</b>	≤ 5%
<b>Assay</b>	≥ 98%
<b>Storage</b>	Store at - 10 °C

# *Product Specifications*

**Catalog Number: 32060**

---

**Additional Information** Taste : Characteristic

**For Laboratory Use Only**