

# Chem-Impex International, Inc.

---

**Tel:** (630) 766-2112

**E-mail:** sales@chemimpex.com

**Shipping and Correspondence:**

935 Dillon Drive

Wood Dale, IL 60191

**Fax:** (630) 766-2218

**Web site:** www.chemimpex.com

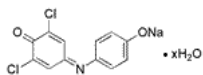
**Manufacturing site:**

825 Dillon Drive

Wood Dale, IL 60191

---

## Product Specifications



<b>Catalogue Number</b>	32046
<b>Product</b>	<b>Sodium 2,6-dichloroindophenolate hydrate</b>
<b>CAS Number</b>	1266615-56-8
<b>Molecular Formula</b>	C <sub>12</sub> H <sub>6</sub> Cl <sub>2</sub> NNaO <sub>2</sub> •xH <sub>2</sub> O
<b>Molecular Weight</b>	290.08

---

<b>Warnings</b>	<i>Moisture sensitive</i>
<b>Appearance</b>	Dark green powder
<b>Loss on Drying</b>	≤ 12% at 120 °C
<b>Dye content</b>	Interfering Dyes : To pass test
<b>Grade</b>	ACS Reagent
<b>Application</b>	Keep container tightly closed in a dry and well-ventilated place
<b>Storage</b>	Store at RT

**For Laboratory Use Only**