

Chem-Impex International, Inc.

Tel: (630) 766-2112

E-mail: sales@chemimpex.com

Shipping and Correspondence:

935 Dillon Drive

Wood Dale, IL 60191

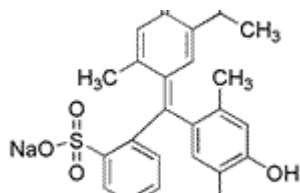
Fax: (630) 766-2218

Web site: www.chemimpex.com

Manufacturing site:

825 Dillon Drive

Wood Dale, IL 60191



Product Specifications

Catalogue Number	32041
Product	Thymol Blue sodium salt Thymolsulfonphthalein sodium salt
CAS Number	62625-21-2
Molecular Formula	C ₂₇ H ₂₉ NaO ₅ S
Molecular Weight	488.57

Appearance	Orange brown to brownish black powder
Clarity & Color	Clarity : To pass test
Visual Transition Range	From pH 1.2 (Red) to pH 2.8 (Yellow) (Acid Range) From pH 8.0 (Yellow) to pH 9.2 (Blue) (Alkaline Range)
Loss on Drying	≤ 8%
Grade	ACS Reagent
Storage	Store at RT
Additional Information	Identification : To pass test

For Laboratory Use Only