

Chem-Impex International, Inc.

Tel: (630) 766-2112

E-mail: sales@chemimpex.com

Shipping and Correspondence:

935 Dillon Drive

Wood Dale, IL 60191

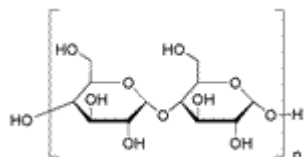
Fax: (630) 766-2218

Web site: www.chemimpex.com

Manufacturing site:

825 Dillon Drive

Wood Dale, IL 60191



Product Specifications

Catalogue Number	32032
Product	Starch, soluble
CAS Number	9005-84-9
Molecular Formula	C ₁₂ H ₂₂ O ₁₁
Molecular Weight	342.3

Appearance	White fine powder
Solubility	To pass test
pH	5 - 7
Sensitivity	To pass test
Grade	ACS
Storage	Store at RT
Additional Information	Identification : To pass test Residue after ignition : ≤ 0.4%

For Laboratory Use Only