

Chem-Impex International, Inc.

Tel: (630) 766-2112

E-mail: sales@chemimpex.com

Shipping and Correspondence:

935 Dillon Drive

Wood Dale, IL 60191

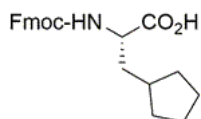
Fax: (630) 766-2218

Web site: www.chemimpex.com

Manufacturing site:

825 Dillon Drive

Wood Dale, IL 60191



Product Specifications

Catalogue Number	31953
Product	Fmoc-L-cyclopentylalanine Fmoc-(S)-3-Cyclopentylalanine Fmoc-Ala(cyclopentyl)-OH
CAS Number	371770-32-0
Molecular Formula	C ₂₃ H ₂₅ NO ₄
Molecular Weight	379.45

Appearance	White to off-white solid
Optical Rotation	[α] _D ²⁰ = -17 ± 2 ° (C=1 in DMF) [α] _D ²⁰ = -8 ± 2 ° (C=1 in MeOH)
Analysis by Mass Spectra	Conforms to standard
¹H NMR	Conforms to structure
Chiral HPLC	≥ 99.5% (ee)
D-Enantiomer	≤ 0.5%
Purity by HPLC	≥ 99%
Storage	Store at 0 - 8 °C

For Laboratory Use Only