

# Chem-Impex International, Inc.

---

**Tel:** (630) 766-2112

**E-mail:** sales@chemimpex.com

**Shipping and Correspondence:**

935 Dillon Drive

Wood Dale, IL 60191

**Fax:** (630) 766-2218

**Web site:** www.chemimpex.com

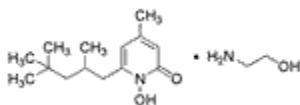
**Manufacturing site:**

825 Dillon Drive

Wood Dale, IL 60191

---

## Product Specifications



**Catalogue Number** 31931

**Product** **Piroctone olamine**

1-Hydroxy-4-methyl-6-(2,4,4-trimethylpentyl)-2(1H)-pyridone ethanolamine

**CAS Number** 68890-66-4

**Molecular Formula** C<sub>14</sub>H<sub>23</sub>NO<sub>2</sub>•C<sub>2</sub>H<sub>7</sub>NO

---

**Appearance** White or slightly yellow crystalline powder

**Solubility** Soluble in methanol, insoluble in water

**Odor** Characteristic

**Melting Point** 133 - 136 °C

**Heavy Metals** ≤ 10 ppm

**pH** 9 - 10

**UV Ratios** E1% (1 cm) at 317 nm = 214 - 236

**Loss on Drying** ≤ 0.3%

**Residual Solvents** Hexane : ≤ 300 ppm

**Particle Size** 30 - 50 μm

**Related Substances** Nitrosamine content : ≤ 50 ppb  
Ethyl acetate : ≤ 500 ppm

**Ash** ≤ 0.2%

**Purity by HPLC** ≥ 99%

**Storage** Store at 2-8° C

**Additional Information** Ethanolamine : 20 - 21%

# *Product Specifications*

Catalog Number: 31931

---

**For Laboratory Use Only**