

Chem-Impex International, Inc.

Tel: (630) 766-2112

E-mail: sales@chemimpex.com

Shipping and Correspondence:

935 Dillon Drive

Wood Dale, IL 60191

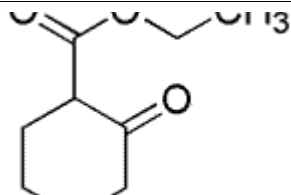
Fax: (630) 766-2218

Web site: www.chemimpex.com

Manufacturing site:

825 Dillon Drive

Wood Dale, IL 60191



Product Specifications

Catalogue Number	31869
Product	Ethyl 2-oxocyclohexanecarboxylate 2-(Ethoxycarbonyl)cyclohexanone Ethyl cyclohexanone-2-carboxylate
CAS Number	1655-07-8
Molecular Formula	C ₉ H ₁₄ O ₃
Molecular Weight	170.21

Appearance	Clear colorless to pale yellow liquid
Solubility	Miscible in Methanol
Density	~ 1.060 gm/mL
Refractive Index	n ₂₀ /D 1.477 - 1.479
Water Content (Karl Fisher)	≤ 0.5%
Purity by GC	≥ 96%
Storage	Store at 0 - 8 °C

For Laboratory Use Only