

# Chem-Impex International, Inc.

---

**Tel:** (630) 766-2112

**E-mail:** sales@chemimpex.com

**Shipping and Correspondence:**

935 Dillon Drive

Wood Dale, IL 60191

**Fax:** (630) 766-2218

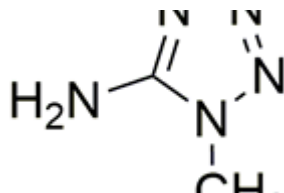
**Web site:** www.chemimpex.com

**Manufacturing site:**

825 Dillon Drive

Wood Dale, IL 60191

---



## Product Specifications

<b>Catalogue Number</b>	31734
<b>Product</b>	<b>5-Amino-1-methyltetrazole</b> 1-Methyltetrazol-5-amine
<b>CAS Number</b>	5422-44-6
<b>Molecular Formula</b>	C <sub>2</sub> H <sub>5</sub> N <sub>5</sub>
<b>Molecular Weight</b>	99.1

---

<b>Appearance</b>	White to off-white powder
<b>Melting Point</b>	220 - 225 °C
<b>Water Content (Karl Fisher)</b>	≤ 0.5%
<b>Loss on Drying</b>	≤ 0.5%
<b>Related Substances</b>	Maximum single impurity : ≤ 0.5% Total impurities : ≤ 1%
<b>Purity by HPLC</b>	≥ 99%
<b>Storage</b>	Store at RT

**For Laboratory Use Only**