

Chem-Impex International, Inc.

Tel: (630) 766-2112

E-mail: sales@chemimpex.com

Shipping and Correspondence:

935 Dillon Drive

Wood Dale, IL 60191

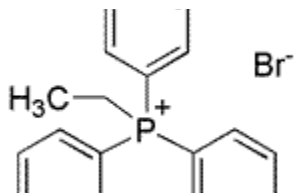
Fax: (630) 766-2218

Web site: www.chemimpex.com

Manufacturing site:

825 Dillon Drive

Wood Dale, IL 60191



Product Specifications

Catalogue Number	31608
Product	Ethyltriphenylphosphonium bromide
	TEP
CAS Number	1530-32-1
Molecular Formula	C ₂₀ H ₂₀ BrP
Molecular Weight	371.25

Warnings	<i>Hygroscopic!</i>
Appearance	White powder
Melting Point	203 - 205 °C
Residual Solvents	≤ 0.50%
¹ H NMR	Conforms to structure
³¹ P NMR	Conforms to structure
Assay by titration	≥ 99%
Storage	Store at RT

For Laboratory Use Only