

# Chem-Impex International, Inc.

---

**Tel:** (630) 766-2112

**E-mail:** sales@chemimpex.com

**Shipping and Correspondence:**

935 Dillon Drive

Wood Dale, IL 60191

**Fax:** (630) 766-2218

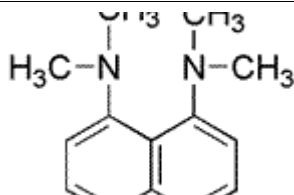
**Web site:** www.chemimpex.com

**Manufacturing site:**

825 Dillon Drive

Wood Dale, IL 60191

---



## Product Specifications

<b>Catalogue Number</b>	31553
<b>Product</b>	<b>1,8-Bis(dimethylamino)naphthalene</b> N1,N1,N8,N8-Tetramethylnaphthalene-1,8-diamine
<b>CAS Number</b>	20734-58-1
<b>Molecular Formula</b>	C <sub>14</sub> H <sub>18</sub> N <sub>2</sub>
<b>Molecular Weight</b>	214.31

---

<b>Appearance</b>	Grey to off-white solid
<b>Melting Point</b>	47 - 51 °C
<b>Loss on Drying</b>	≤ 0.5%
<b>Purity</b>	≥ 98%
<b>Storage</b>	Store at RT

**For Laboratory Use Only**