

Chem-Impex International, Inc.

Tel: (630) 766-2112

E-mail: sales@chemimpex.com

Shipping and Correspondence:

935 Dillon Drive

Wood Dale, IL 60191

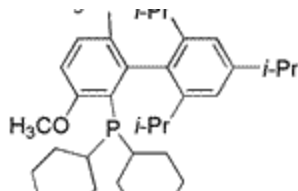
Fax: (630) 766-2218

Web site: www.chemimpex.com

Manufacturing site:

825 Dillon Drive

Wood Dale, IL 60191



Product Specifications

Catalogue Number 31475

Product **Brettphos**

2-(Dicyclohexylphosphino)3,6-dimethoxy-2',4',6'-triisopropyl-1,1'-biphenyl

CAS Number 1070663-78-3

Molecular Formula C₃₅H₅₃O₂P

Appearance Off-white to white solid

Melting Point 187 - 195 °C

¹H NMR Conforms to structure

³¹P NMR Conforms to structure

Purity by HPLC ≥ 98%

Application Ligand for the Suzuki-Miyaura coupling of tosylates and mesylates.

Storage Store at 0-8 °C

For Laboratory Use Only