

Chem-Impex International, Inc.

Tel: (630) 766-2112

E-mail: sales@chemimpex.com

Shipping and Correspondence:

935 Dillon Drive

Wood Dale, IL 60191

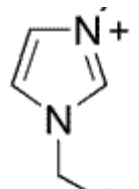
Fax: (630) 766-2218

Web site: www.chemimpex.com

Manufacturing site:

825 Dillon Drive

Wood Dale, IL 60191



Product Specifications

Catalogue Number	31411
Product	1-Ethyl-3-methylimidazolium hexafluorophosphate EMIMPF ₆
CAS Number	155371-19-0
Molecular Formula	C ₆ H ₁₁ N ₂ •PF ₆
Molecular Weight	256.13
Appearance	White crystal powder
Melting Point	58-62°C
¹H NMR	Conforms to structure
Purity by HPLC	≥ 99%
Storage	Store at 2-8°C

For Laboratory Use Only