

Chem-Impex International, Inc.

Tel: (630) 766-2112

E-mail: sales@chemimpex.com

Shipping and Correspondence:

935 Dillon Drive

Wood Dale, IL 60191

Fax: (630) 766-2218

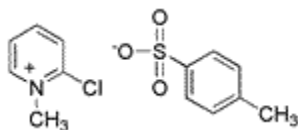
Web site: www.chemimpex.com

Manufacturing site:

825 Dillon Drive

Wood Dale, IL 60191

Product Specifications



Catalogue Number	31288
Product	2-Chloro-1-methylpyridinium <i>p</i>-toluenesulfonate
CAS Number	7403-46-5
Molecular Formula	C ₇ H ₇ O ₃ S•C ₆ H ₇ ClN
Molecular Weight	299.77

Warnings	<i>Hygroscopic ! Protect from Light !</i>
Appearance	White to off-white crystalline powder
Melting Point	121-126 °C
Loss on Drying	≤ 0.5%
Purity by HPLC	≥ 98%
Storage	Store at ≤ -4 °C

For Laboratory Use Only