

Chem-Impex International, Inc.

Tel: (630) 766-2112

E-mail: sales@chemimpex.com

Shipping and Correspondence:

935 Dillon Drive

Wood Dale, IL 60191

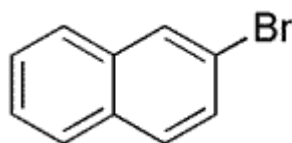
Fax: (630) 766-2218

Web site: www.chemimpex.com

Manufacturing site:

825 Dillon Drive

Wood Dale, IL 60191



Product Specifications

Catalogue Number	31005
Product	2-Bromonaphthalene
CAS Number	580-13-2
Molecular Formula	C ₁₀ H ₇ Br
Molecular Weight	207.07

Appearance	Off-white solid
Water Content (Karl Fisher)	≤ 0.5%
Purity by GC	≥ 99%
Storage	Store at RT

For Laboratory Use Only