

Chem-Impex International, Inc.

Tel: (630) 766-2112

E-mail: sales@chemimpex.com

Shipping and Correspondence:

935 Dillon Drive

Wood Dale, IL 60191

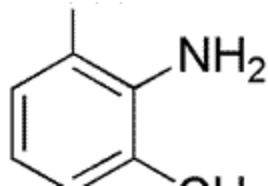
Fax: (630) 766-2218

Web site: www.chemimpex.com

Manufacturing site:

825 Dillon Drive

Wood Dale, IL 60191



Product Specifications

Catalogue Number 30843
Product **2-Amino-3-methylphenol**

2-Amino-*m*-cresol

2-Hydroxy-6-methylaniline

CAS Number 2835-97-4

Molecular Formula C₇H₉NO

Molecular Weight 123.15

Appearance Light yellow crystalline powder

Solubility Soluble in methanol

Melting Point 146 - 150 °C

¹H NMR Conforms to structure

Purity by HPLC ≥ 99%

Storage Store at RT

For Laboratory Use Only