

Chem-Impex International, Inc.

Tel: (630) 766-2112

E-mail: sales@chemimpex.com

Shipping and Correspondence:

935 Dillon Drive

Wood Dale, IL 60191

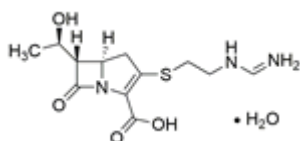
Fax: (630) 766-2218

Web site: www.chemimpex.com

Manufacturing site:

825 Dillon Drive

Wood Dale, IL 60191



Product Specifications

Catalogue Number	30802
Product	Imipenem Monohydrate Primaxin monohydrate (5R,6S)-6-[(1R)-1-Hydroxyethyl]-3-[[2-[(iminomethyl)amino]ethyl]
CAS Number	74431-23-5
Molecular Formula	C ₁₂ H ₁₇ N ₃ O ₄ S · H ₂ O
Molecular Weight	317.36

Appearance	Pale yellow powder
Water Content (Karl Fisher)	5 - 8%
pH	4.5 - 7.5
Optical Rotation	[α] _D ²⁰ = 90 - 95 °
Infrared Spectrum	Conforms to structure
Purity by HPLC	98 - 102%
Storage	Store at 0 - 8 °C

For Laboratory Use Only