

# Chem-Impex International, Inc.

---

**Tel:** (630) 766-2112

**E-mail:** sales@chemimpex.com

**Shipping and Correspondence:**

935 Dillon Drive

Wood Dale, IL 60191

**Fax:** (630) 766-2218

**Web site:** www.chemimpex.com

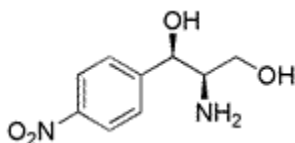
**Manufacturing site:**

825 Dillon Drive

Wood Dale, IL 60191

---

## Product Specifications



<b>Catalogue Number</b>	30780
<b>Product</b>	<b>(1R,2R)-(-)-2-Amino-1-(4-nitrophenyl)-1,3-propanediol</b> D-(-)- <i>threo</i> -2-Amino-1-(p-nitrophenyl)-1,3-propanediol  Chloramphenicol base
<b>CAS Number</b>	716-61-0
<b>Molecular Formula</b>	C <sub>9</sub> H <sub>12</sub> N <sub>2</sub> O <sub>4</sub>
<b>Molecular Weight</b>	212.2
<b>Appearance</b>	White or almost white crystalline powder
<b>Melting Point</b>	159.5-166 °C
<b>Optical Rotation</b>	[α] <sup>20</sup> <sub>D</sub> = -28 to -30.5° (C=2.4 in 1N HCl)
<b>Loss on Drying</b>	≤ 0.3%
<b>Residue On Ignition</b>	≤ 0.5%
<b>Assay</b>	≥ 99%
<b>Storage</b>	Store at 0-8 °C

---

**For Laboratory Use Only**